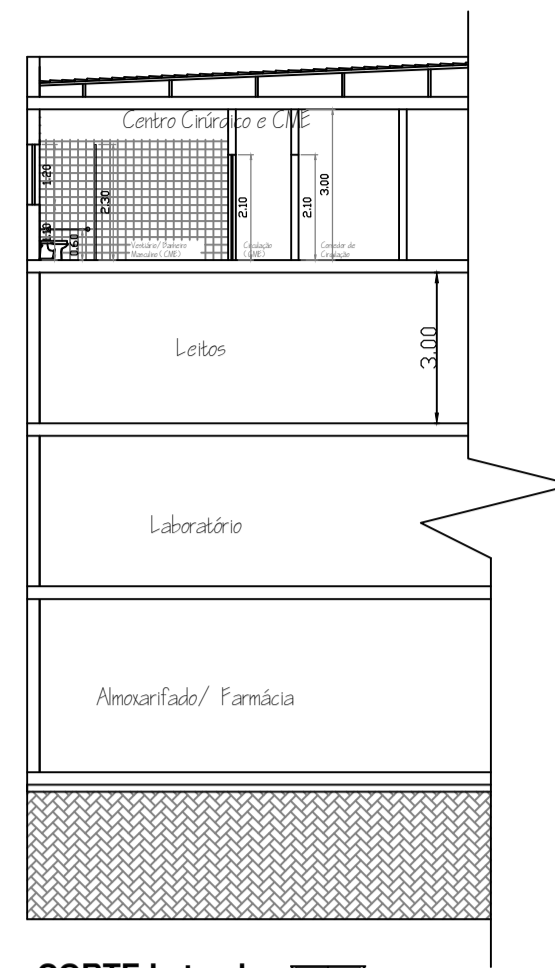
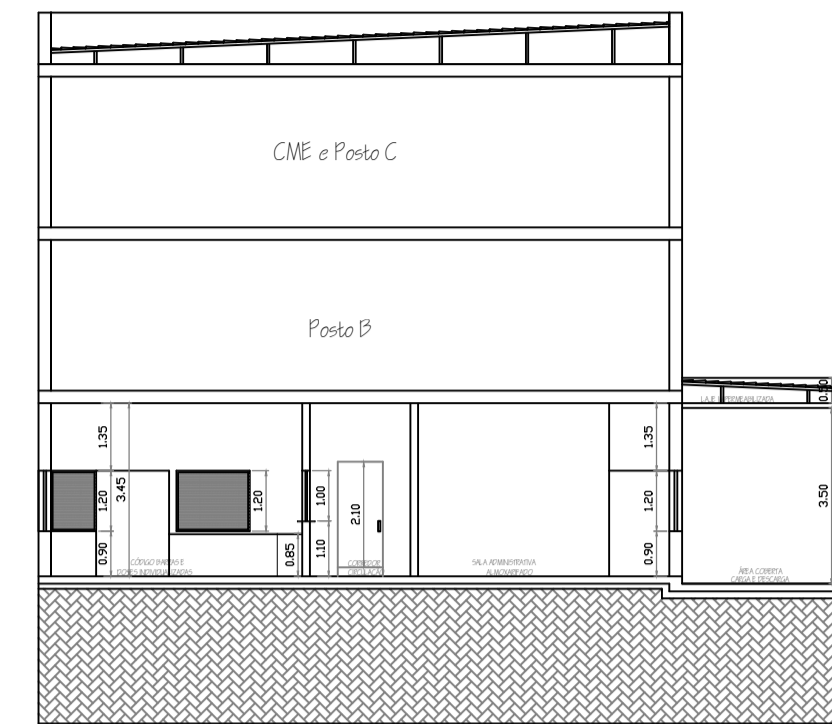


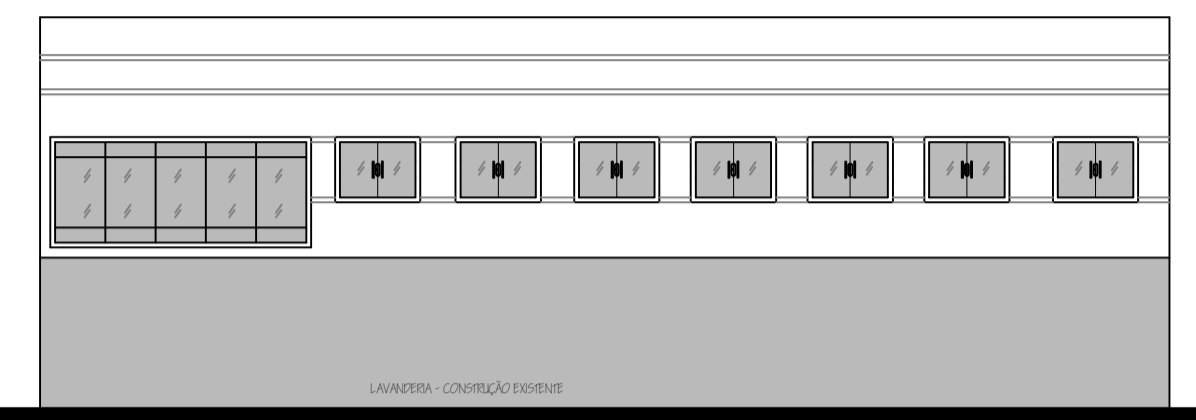
CORTES E FACHADA COZINHA



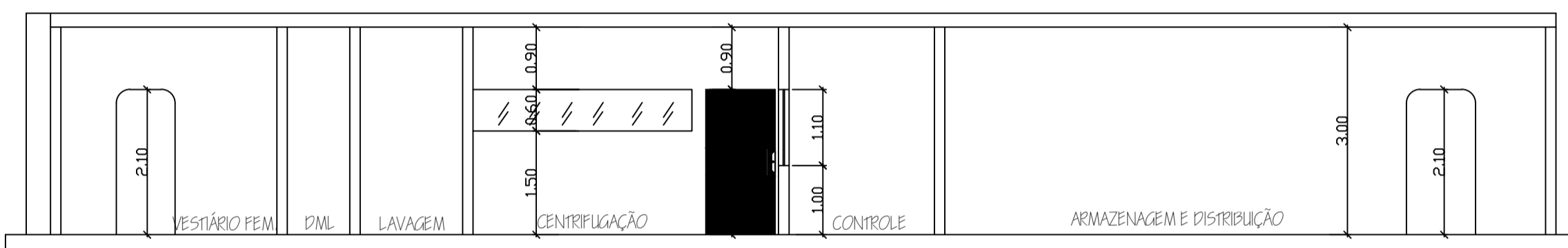
CORTE Lateral
Escala 1/100



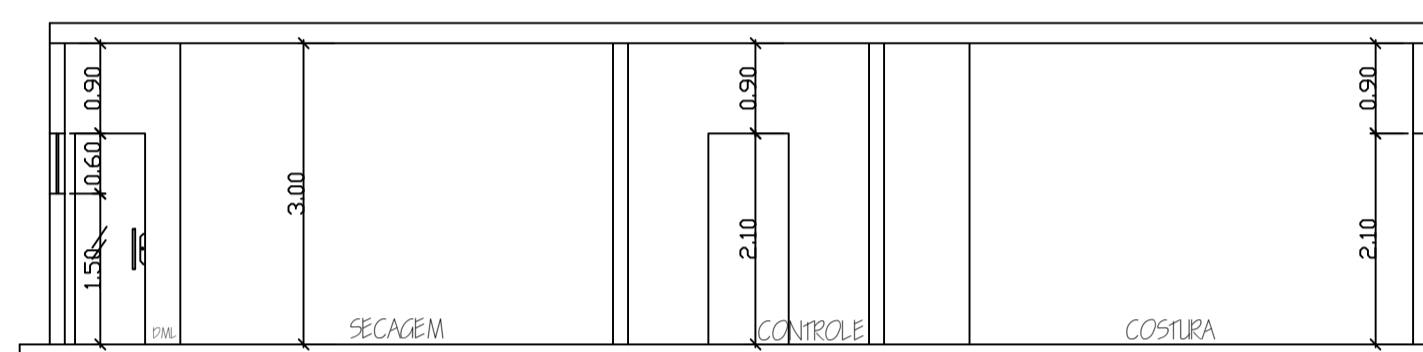
CORTE lateral
Escala 1/100



FACHADA POSTERIOR

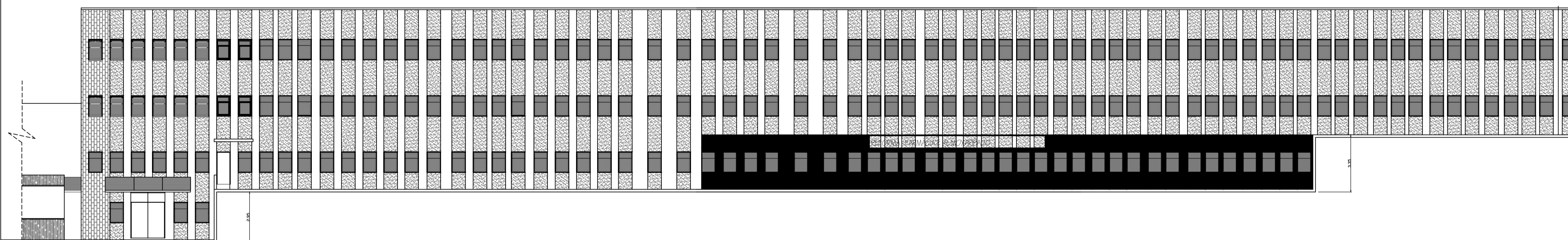


CORTE BB
Escala 1/50

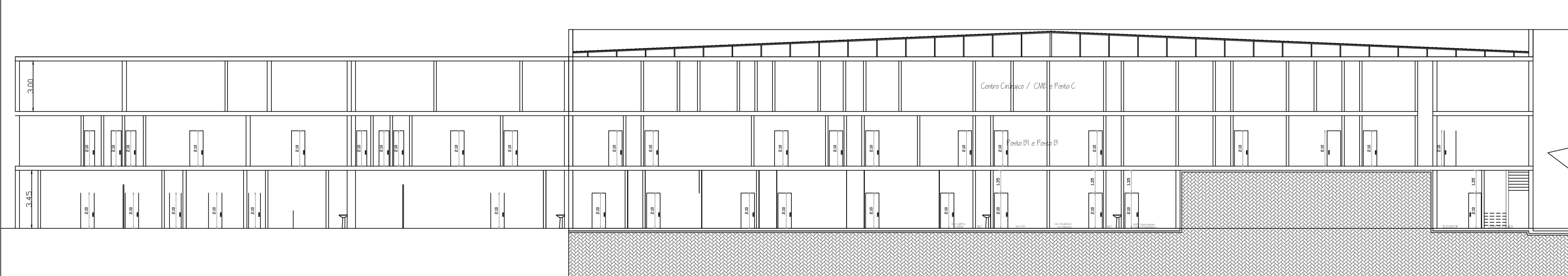


CORTE AA
Escala 1/50

CORTES LAVANDEIRIA



FACHADA FRONTAL
Escala 1/100



CORTE AA
Escala 1/100

RESP. TÉCNICO		
FOLHA 08/08	PROJETO COMPLETO	ESC. INDICADA
ASSUNTO PROJETO TÉCNICO DE PROTEÇÃO CONTRA INCÊNDIO		
OCUPAÇÃO SERVIÇOS DE SAÚDE E INSTITUCIONAIS H3		
LOCAL R PRES TANCREDO NEVES, 500 - BOM PASTOR - VARGINHA/MG		
PROPRIETÁRIO FUNDACAO HOSPITALAR DO MUNICIPIO DE VARGINHA FHEMUV		
RESP. TÉCNICO CARLOS ANTONIO DE PALVA	CREA: 55279/MG	
ÁREA DO TERRENO 9.678,96 m ²	ÁREA CONSTRUÍDA: 8.908,96 m ²	
DESENHISTA Dona P. Tavares		